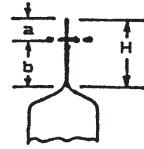
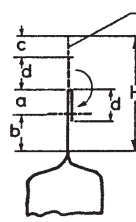


Bag Sizes related to Sewing Machine used

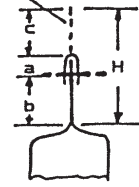
Types of Closure



1.
Plain Closure



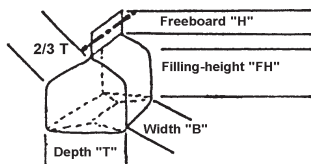
2.
Fold-over Closure



3.
Fold-over Tape Closure

Sewing Machine BC211, BC291	Sewing Machine 80800	Clos- ure	a mm	b mm	c mm	d mm	H (min)
P01-1	C, D	1	20-150	45	-	-	65
P12-1M, -1A, -1B UD16-2M	R,RL,RLB,RLM, S,SL,SLB,SLM	1	20-150	45	-	-	65
P12-1M, -1A, -1B, with bag feed-in device FB29905A, GB29905G or GBR29905G	R,RL,RLB,RLM, S,SL,SLB,SLM with bag feed- in device FB29905A or GBR29905G	1	20-120	90	-	-	110
P12-1M, -1A, -1B UD16-2M with short bag feed-in device F29905A, G29905G or GR29905G	R,RL,RLB,RLM, S,SL,SLB,SLM with short bag feed-in device GR29905G	1	20-120	50	-	-	70
P12-1M, -1A, -1B with bag feed-in device FB29905A, GB29905G or GBR29905G and bag top fold-over device 93051FA	R,RL,RLB,RLM, S,SL,SLB,SLM with bag feed-in device FB29905A or GBR29905G, and bag top fold-over device 93051FA	2	20	90	-	35	145
P12-1M, -1A, -1B with bag feed-in, trimming and fold-over device FB29915A, GB29915G or GBR29915G	R,RL,RLB,RLM, S,SL,SLB,SLM with bag feed-in, trimming and fold-over device FB29915A or GBR29915G	2	20	90	10-50	35	155
U14-1M	U, UL, ULM	3	20	45	-	-	65
UA14-1M with bag feed-in, trimming and taping device FB2910A, GB29910G or GBR29910G	UA, UAL, UALM, with bag feed-in, trimming, taping and tape-over device FB29910A or GBR29910G	3	20	90	10-90	-	120
K14-1M	TL	3	20	45	-	-	65
KA14-1M with bag feed-in and trimming device FB29920A or GBR29920G	TAL, with bag feed-in and trimming device FB29920A or GBR29920G	3	20	90	10-90	-	120

Determination of the Bag Size



The necessary bag size results from the required volume (determined by the specific weight of the filling product), the slant range (2/3 of the depth "T"), and the freeboard "H" from the chart above.